

AISI 304 stainless steel case & wall bracket

NPS10 x 15 m Hototal EPDM rubber hose

G1/2" male inlet for water entry (left side)

"NITO II" Adjustable flow spray gun

PRODUCT COMPLIANCE:

2006/42/EC
CE n. 1907/2006 Regulations
Directive 2002/95/CE; 2018/851SCIP

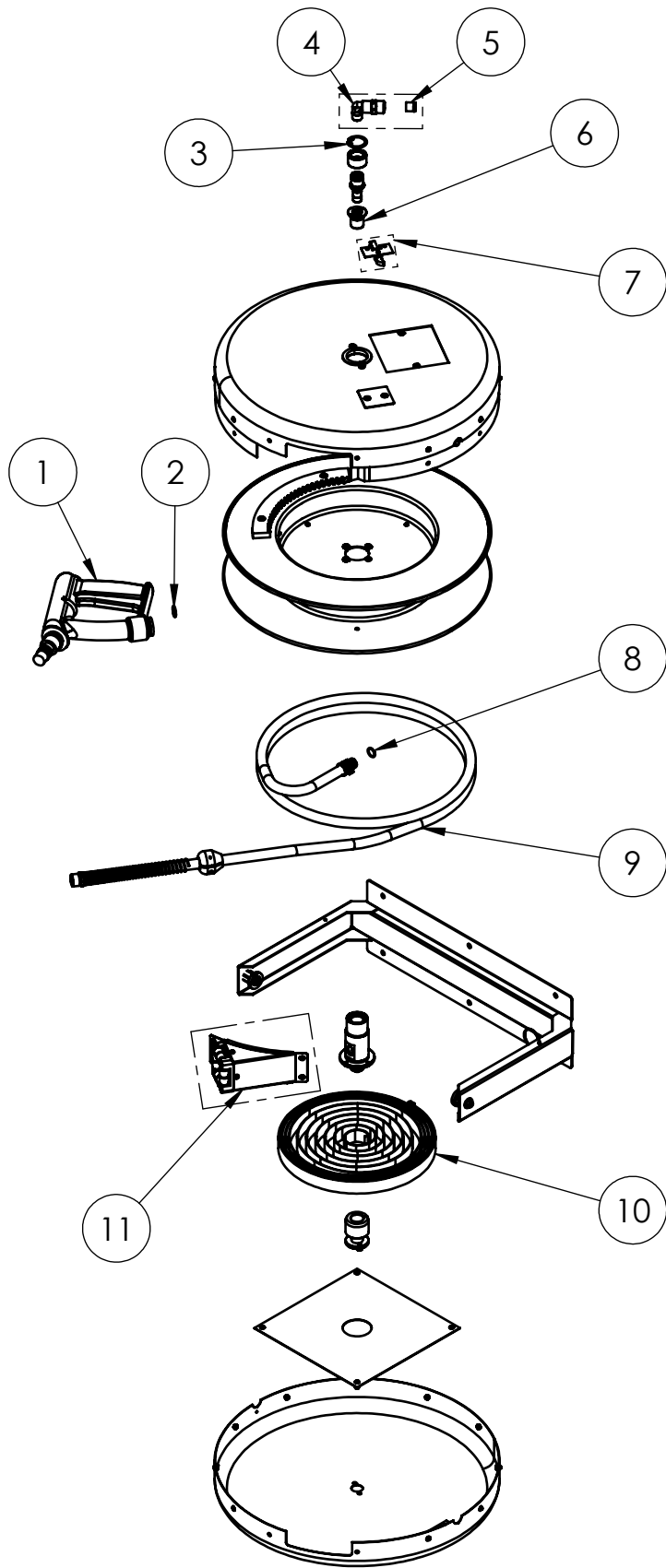
TITLE / DESCRIZIONE
MAXIReel. Automatic, wall mount, swivel hose reel with 15m (NPS10) Hototal EPDM rubber retractable hose. Heavy duty "NITO II" COMBI spray gun with adjustable flow. G1/2" male inlet with built-in check valve. AISI 304 stainless steel case and wall bracket.

DRN / DIS E.Artini	CHD / VER	APPR
SCALE / SCALA 1:12	DATE / DATA 27/06/22	SHEET / PAG 1 of 2
NUMBER / CODICE DIS.	MODEL / PRODOTTO 5R.M15.449	

This drawing contains proprietary information which is the property of KLARCO S.R.L. without whose written permission it may not be copied, shown or handed to a third party or otherwise used

Questo disegno contiene informazioni di proprietà di KLARCO S.R.L. e senza la sua autorizzazione scritta non può essere copiato, mostrato o ceduto a terzi o in qualsiasi altro modo usato

ITEM NO.	SALES NO.	DESCRIPTION
1	P449	"NITO II" SPRAY GUN, female G1/2"
2	P074	FLAT GASKET 1/2" Ø18,5x11 sp.2mm
3	P206	JS SEEGER-RING (HEAVY DUTY) DIN 472
4	P203	90° COUPLING + CHECK VALVE
5	P030	CHECK VALVE DW15/DN10
6	P333	BUSHING+O-RINGS
7	P273	PLATE WITH SPRING AND PAWL
8	P097	O-RING 2056 (Ø14x1.78), EPDM70 PEROX
9	F135	NPS 10 x 15m HOSE REPLACEMENT KIT
10	P223	M15-M20 REEL SPRING
11	P387	M15-20 ROLLER REPAIR KIT



PRODUCT COMPLIANCE:

2006/42/EC

CE n. 1907/2006 Regulations

Directive 2002/95/CE; 2018/851SCIP

TITLE / DESCRIZIONE
MAXIReel. Automatic, wall mount, swivel hose reel with 15m (NPS10) Hototal EPDM rubber retractable hose. Heavy duty "NITO II" COMBI spray gun with adjustable flow. G1/2" male inlet with buuilt in check valve. AISI 304 stainless steel case and wall bracket.

DRN / DIS

E.Artini

CHD / VER

APPR

SCALE /
SCALA 1:12

DATE /
DATA 27/06/22

SHEET / PAG
2 of 2

NUMBER / CODICE DIS.

MODEL / PRODOTTO

5R.M15.449

A4V

This drawing contains proprietary information which is the property of KLARCO S.R.L. without whose written permission it may not be copied, shown or handed to a third party or otherwise used

Questo disegno contiene informazioni di proprietà di KLARCO S.R.L. e senza la sua autorizzazione scritta non può essere copiato, mostrato o ceduto a terzi o in qualsiasi altro modo usato