

**Rough-In Requirement:
29mm Mounting Hole**

TITLE / DESCRIZIONE

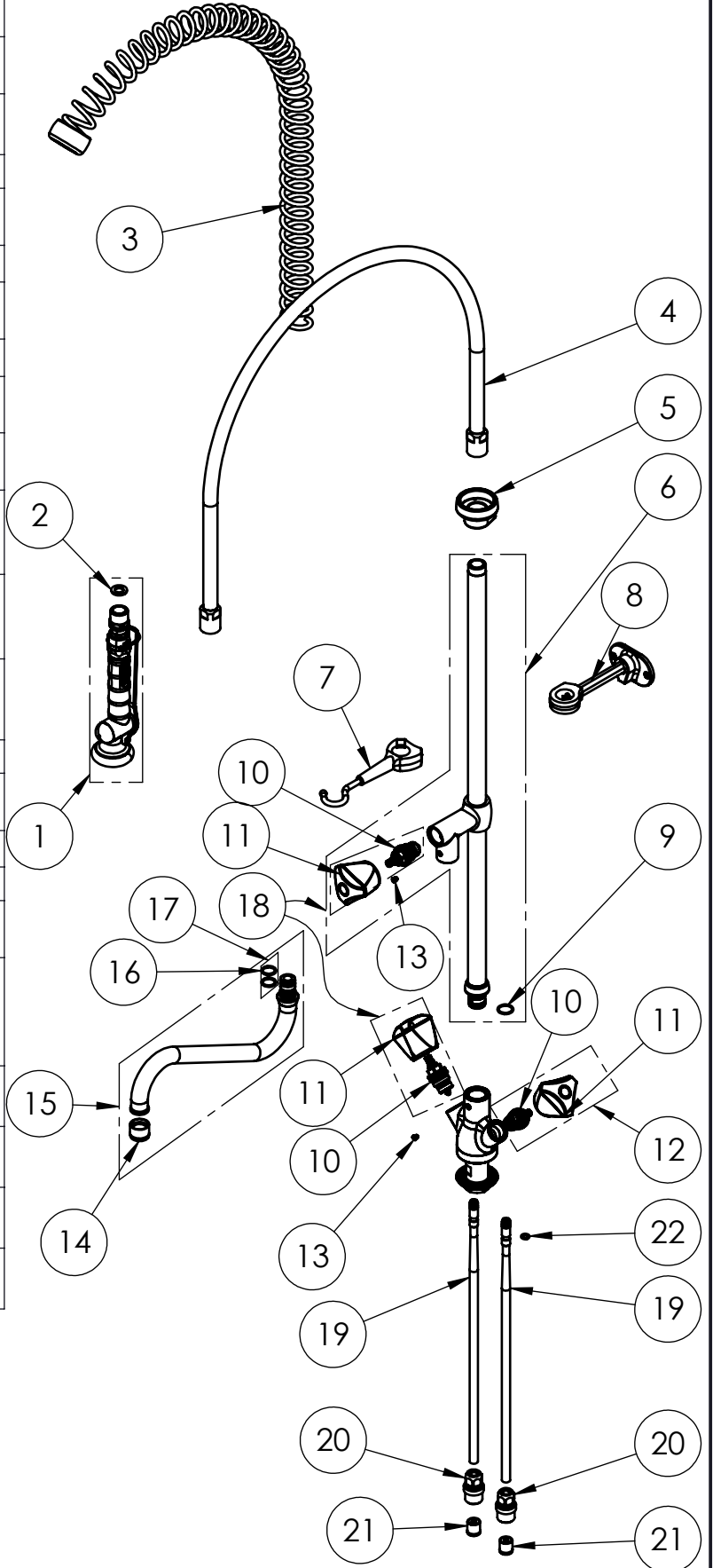
Single hole, deck-mount, mixing temperature monoblock faucet Pre-Rinse Unit with riser add-on faucet with 250mm swivel nozzle (Ø 20mm), 50mm-long mounting shank, G1/2" male inlets with check valves, G1/2" compression headworks, riser tube - stainless steel, brass, chrome plated, 14l/min KLARCO®BEST PRO®spray valve.

This drawing contains proprietary information which is the property of KLARCO S.R.L. without whose written permission it may not be copied, shown or handed to a third party or otherwise used

Questo disegno contiene informazioni di proprietà di KLARCO S.R.L. e senza la sua autorizzazione scritta non può essere copiato, mostrato o ceduto a terzi o in qualsiasi altro modo usato

DRN / DIS	CHD / VER	APPR
SCALE / SCALA 1:10	DATE / DATA 28/02/2020	SHEET / PAG 1 of 2
NUMBER / CODICE DIS.	MODEL / PRODOTTO 3S.2403.S1.S3	A4V

ITEM NO.	SALES NO.	DESCRIPTION
1	P499/N	SPRAY VALVE "BEST PRO" BLACK
2	P074	FLAT GASKET 1/2" Ø18,5x11 sp.2mm
3	P005	OVERHEAD SPRING "GREY"
4	P163	100cm Ø17 F1/2"xF1/2" FLEXIBLE HOSE
5	P090	SPRING SUPPORT
6	P266/S3	650mm G1/2" RISER W.ADD ON TAP AND O-RING
7	P091	SPRAY VALVE HOOK
8	P092	Wall Bracket L.115mm (BLACK)
9	P076	O-RING 2062 (Ø15.6x1.78), EPDM 70 PEROX
10	VS0	G1/2" COMPRESSION HEADWORK
11	H033/color	"3Pe" HANDLE W. COLOR CODED INDEX (specify the color B or R)
12	VS3/B	COMPLETE HANDLE W.BLUE CODED INDEX +HEADWORK KIT
13	P236	SPOUT SCREW (short)
14	P015	STREAM REGULATOR OUTLET (Ø20 SPOUT)
15	C0S1	SWING NOZZLE Ø20x250 h.70
16	P197	O-RING 14x2 EPDM 70
17	P612	#2 OR KIT FOR FAUCET (STYL RST)
18	VS3/R	COMPLETE HANDLE W.RED CODED INDEX +HEADWORK KIT
19	P493	Copper Pipe with O-RING
20	P110	Compression Male G1/2 fitting
21	P030	BACKFLOW PREVENTER DW15/DN10
22	P158	O-RING 106 (Ø6.75x1.78), EPDM 70



TITLE / DESCRIZIONE

Single hole, deck-mount, mixing temperature monoblock faucet Pre-Rinse Unit with riser add-on faucet with 250mm swivel nozzle (Ø 20mm), 50mm-long mounting shank, G1/2" male inlets with check valves, G1/2" compression headworks, riser tube - stainless steel, brass, chrome plated, 14l/min KLARCO®BEST PRO®spray valve.

This drawing contains proprietary information which is the property of KLARCO S.R.L. without whose written permission it may not be copied, shown or handed to a third party or otherwise used

Questo disegno contiene informazioni di proprietà di KLARCO S.R.L. e senza la sua autorizzazione scritta non può essere copiato, mostrato o ceduto a terzi o in qualsiasi altro modo usato

DRN / DIS

SCALE / SCALA 1:8

NUMBER / CODICE DIS.

CHD / VER

DATE / DATA 28/02/2020

MODEL / PRODOTTO

3S.2403.S1.S3

APPR

SHEET / PAG 2 of 2

A4V